

# THE LOTUS RANGE





# CONTENTS

Lotus Heritage	2-5
Lotus Range	6-15
Detail	16-19
Handling and Performance	20-21
Safety	22-23
Environment	24-25
Colour and Trim	26-29
Technical Data	30-31
Further Information	32



## BORN TO **PERFORM**

When Colin Chapman built his first car in 1948, he adopted a principle that has been the foundation of Lotus sports cars ever since – “to add speed, add lightness”. Lotus was born to perform. After 60 years of excellence on both road and track at the highest levels of world motorsport, today’s Lotus range more than lives up to the heritage.





## A WINNING FORMULA



Lotus has a superb reputation for technical innovation and invention. It's a reputation that is well-deserved, having delivered an enviable sporting history. Since the company was founded in 1952, the marque has achieved more than 475 Grand Prix starts, complete with 79 Formula 1

victories and seven World Championships. In addition, Lotus cars have successfully competed in Rally, Le Mans, Indy and Saloon car classes. Along the way, Lotus has created some of the world's most iconic sports cars. Among them, such classic names as the original Elite, the Lotus 7, Esprit, Elan, Exige,

Elise and Evora. From the green and yellow traditional racing colours of the Type 25 through to supercars that set new standards in road performance and handling, every single car that carries the Lotus badge is still a thoroughbred born of competition and an unquenchable desire to win.





## THE DRIVER'S CHOICE

Performance and safety. Responsiveness and comfort. Everything comes together beautifully in the latest range of extraordinary models – Exige, Elise, Evora and 2-Eleven – that carry the renowned Lotus badge. Whether you're looking for sheer power and muscle or sophisticated handling and driver control, you'll find it all in a Lotus.



EVORA



## PRECISION PERFORMANCE

The Lotus tradition of world-class automotive engineering is clearly evident in the flagship Evora. This highly acclaimed car combines the agility of a finely balanced sports model with the instinctive responsiveness of a thoroughbred Lotus.

A lightweight, mid-engined, rear-wheel drive configuration results in finesse and feedback like no

other, whilst the optional 2+2 passenger cabin layout gives you the bonus of a practical use of space.

With the latest bonded chassis technology, tuned braking systems and bespoke suspension components which give the Evora perfect balance and poise, you will appreciate the

tactile feedback and instant response to each and every driver input.

From the elegant cabin, ergonomic instrumentation and trim through to finishing detail, the Evora is the perfect blend of design and performance for the perfect driving experience.



*ELISE*

## A MODERN CLASSIC

The latest Lotus to carry the Elise name is a truly modern evolution of the classic two-seat sports car. A Lotus that immerses you totally in the intensity of the drive each and every time you take the wheel.

This is a car that has been designed, honed and purposefully engineered to

maximise driver involvement, to deliver exceptional feedback and deliver an engaging, fun experience.

A lightweight purposeful roadster designed to meet the demands of the modern driving enthusiast and the city sports car fan alike.

With precision control, perfect balance and beautifully responsive dynamics, the Elise also delivers class-leading low CO<sub>2</sub> emissions.





EXIGE



## RACE-BRED FOR THE ROAD

Meet the Exige: born on the track, designed for the road and built around the driver.

Track-inspired details include the rear diffuser and cool air ducting for the engine intercooler that amplify the potent abilities of this exceptional car.

With a punchy 1.8 litre VVTL-i, mid-mounted engine matched to an agile, race-derived bonded

chassis, the Exige never fails to reward driver input.

Squat, purposeful haunches and specially designed aerodynamics deliver increased downforce that adds even more to the car's formidable performance capabilities.

A driver's car. A thoroughbred. A lightweight car with an aggressive stance that underlines the performance pedigree of Lotus that few can even hope to match.

ELEVEN



## LIGHT FANTASTIC

Built with the track-day connoisseur in mind, the 2-Eleven delivers world-class handling, impressive durability, exceptional reliability and extreme performance. All in a package that can be customised using a range of option packs to create a vehicle that's perfectly suited to your needs.

Although most drivers will be track day specialists or club sport racers, there's even a package that enables the 2-Eleven to be used as a road car offering the very highest standards of performance.

Based around a normally aspirated supercharged 192 PS engine, the 2-Eleven can be configured to increase

its engine power and torque by as much as 25%.

Couple the sheer brute power with a chassis that weighs in at less than 750kg and you have a car that delivers performance that even a supercar would find respectable.





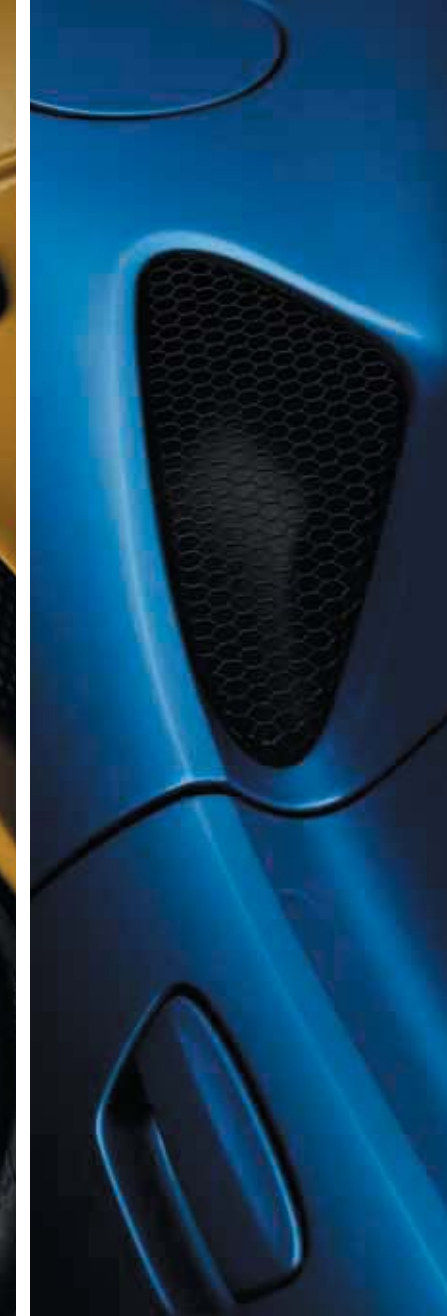
## EVERY DETAIL MATTERS

Pure driving pleasure starts with exceptional attention to detail. From the carefully positioned control ergonomics to the driver information display, every element of the design has been pored over by Lotus designers. The single-minded aim: a driving experience that rewards you like no other car.



## DESIGNED TO **PERFORM**

Detailed attention to every component is evident wherever you look. Lotus has a reputation for world-class automotive engineering. Each component is optimised to ensure every element adds to the overall performance and pure driving pleasure.





## INSTINCTIVELY RESPONSIVE

Lotus has always been a leader in delivering world-class standards of handling and performance. The latest cars to carry the Lotus badge continue that tradition. The result

of a rigorous development programme, each car has been put through its paces in a series of extreme, harsh and challenging environments. The result: perfectly balanced chassis

platforms, instinctive driver control, immense agility and touch-perfect throttle and braking response. Dynamics designed to inspire total confidence – while still taking your breath away.





## PLAY SAFE

Safety is engineered at every level of Lotus vehicle development. Lotus specialises in the design and production of lightweight, but strong chassis, using the latest design techniques, bonding processes and composite materials. The result is lightweight cars that are strong and safe yet elegant and balanced, able to respond to driver inputs instantaneously. For each model, Lotus develops tuned suspension packages and bespoke braking systems to maximise every aspect of dynamic performance.

Continued research and development into the areas of driver/passenger comfort and vehicle interiors provide the driver with a stimulating environment and intuitive control interaction, leaving them free to concentrate on the road ahead.

The use of enhanced performance parts increases the vehicle's ability to cope in emergency situations, combining power and control when it is needed most.





## EMISSION CONTROL

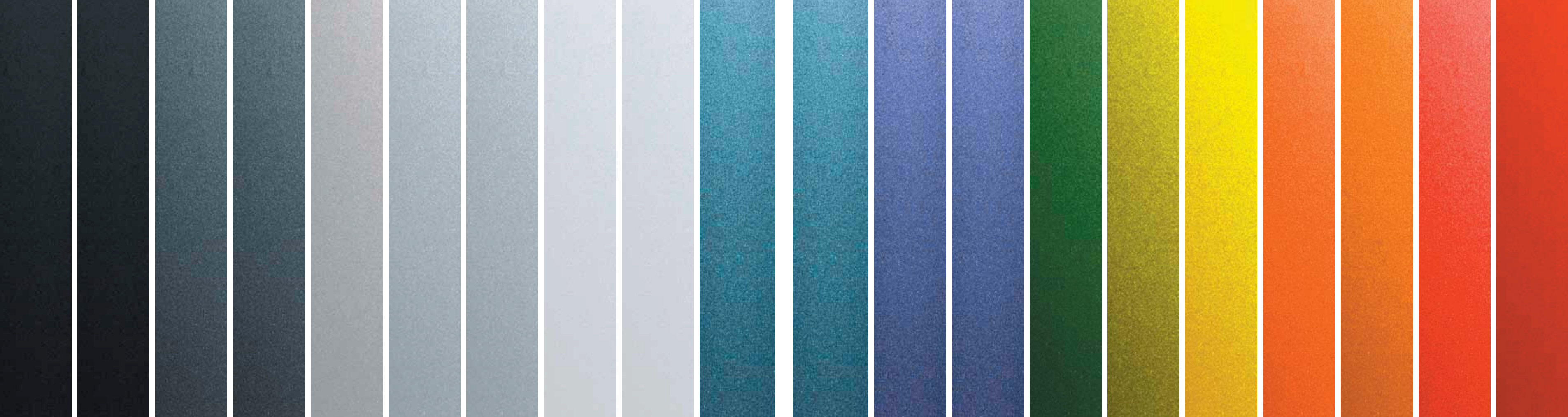
Today's environmental challenges are ones that Lotus founder Colin Chapman would have relished. Indeed, for decades Lotus cars have pursued the objective of being as efficient as possible, through lightweight engineering, using the least number of parts effectively and

delivering maximum performance from efficient powertrain packages. The results are immediately noticeable, with both Evora and Elise delivering class-leading low CO<sub>2</sub> emissions without sacrificing any driving pleasure.

As the future arrives, Lotus continues to be at

the forefront of automotive development, delivering new solutions in the field of hybrid vehicles, alternative power sources and material technology; developing vehicles that deliver maximum driving enjoyment with reduced environmental impact.





<b>PHANTOM BLACK</b> LIFESTYLE COLOUR	<b>STARLIGHT BLACK</b> METALLIC COLOUR	<b>CARBON GREY</b> LIFESTYLE COLOUR	<b>GRAPHITE GREY</b> LIFESTYLE COLOUR	<b>STORM TITANIUM</b> METALLIC COLOUR	<b>QUARTZ SILVER</b> LIFESTYLE COLOUR	<b>ARCTIC SILVER</b> METALLIC COLOUR	<b>ICE WHITE</b> PREMIUM COLOUR	<b>ASPEN WHITE</b> LIFESTYLE COLOUR	<b>LIQUID BLUE</b> METALLIC COLOUR	<b>AQUAMARINE BLUE</b> LIFESTYLE COLOUR	<b>LASER BLUE</b> LIFESTYLE COLOUR	<b>PERSIAN BLUE</b> METALLIC COLOUR	<b>BRITISH RACING GREEN</b> SOLID COLOUR	<b>ISOTOPE GREEN</b> LIFESTYLE COLOUR	<b>SOLAR YELLOW</b> METALLIC COLOUR	<b>CHROME ORANGE</b> LIFESTYLE COLOUR	<b>BURNT ORANGE</b> PREMIUM COLOUR	<b>ARDENT RED</b> SOLID COLOUR	<b>CANYON RED</b> METALLIC COLOUR
--	---	--	--	--	--	---	------------------------------------	--	---------------------------------------	--	---------------------------------------	--	---	--	--	--	---------------------------------------	-----------------------------------	--------------------------------------





**BLACK CLOTH**    **BLACK LEATHER**    **ANTHRACITE SUEDETEX®**  
AVAILABLE JAN 2011    **CHARCOAL LEATHER**    **COCOBOLO LEATHER**    **RUBY LEATHER**    **PAPRIKA LEATHER**    **BISCUIT LEATHER**    **OYSTER LEATHER**    **MAGNOLIA LEATHER**    **CREAM LEATHER**

## ADD THE **PERSONAL** TOUCH

Choose from a range of seat options to create the perfect driving environment. You can also choose from a number of wheel options, each one designed to ensure that your Lotus grips the road as you enjoy its agility and race-bred performance capabilities.



ProBax™ Seat  
ELISE/EXIGE



Recaro leather sports seat  
EVORA

Colour swatches are for illustration purposes only and may not accurately reflect the actual colour finish of the vehicle. Please consult your Lotus dealer for accurate colour samples.



# TECHNICAL SPECIFICATION

Every Lotus is designed to deliver pure driving pleasure through a combination of lightweight engineering and utilising the minimum number of parts efficiently. These principles are hard-wired into the DNA of every car to carry the Lotus badge.

## ELISE

	ELISE	ELISE R	ELISE SC
0-60 mph (seconds)	6.0	5.1	4.3
0-100 km/h (seconds)	6.5	5.4	4.6
0-100 mph (0-160 km/h) (seconds)	18.6	13.4	10.8
Max speed (mph (km/h))	127 (204)	138 (222)	145 (233)
Max power	134 hp at 6800 rpm (100 kW) (136 PS)	189 hp at 7800 rpm (141 kW) (192 PS)	217 hp at 8000 rpm (163 kW) (220 PS)
Max torque	118 lbft at 4400 rpm (160 Nm) (16.3 kgm)	133 lbft at 6800 rpm (181 Nm) (18.5 kgm)	154.8 lbft at 5000 rpm (210 Nm) (21.4 kgm)
Gear ratios in I	3.538:1	3.116:1	3.116:1
II	1.913:1	2.050:1	2.050:1
III	1.310:1	1.481:1	1.481:1
IV	0.971:1	1.166:1	1.166:1
V	0.818:1	0.916:1	0.916:1
VI	0.700:1	0.815:1	0.815:1
Reverse	3.333:1	3.250:1	3.250:1
Final drive	4.294:1	4.529:1	4.529:1
Unladen vehicle mass (kg)	876	860	870
Weight distribution front and rear in kg and corner weights	F: 342 R: 534 (39% - 61%)	F: 327 R: 533 (38% - 62%)	F: 331 R: 539 (38% - 62%)
Curb weight (lbs) (US only)	N/A	2010	2041
Fuel tank capacity		9.6 gal UK (43.5l) 11.5 gal US (43.5l)	

### Fuel consumption (mpg (l/100 km))

Urban	34 (8.3)	24.4 (11.6)	23.9 (11.8)
Extra Urban	56 (5.0)	45.6 (6.2)	44.1 (6.4)
Combined	45 (6.3)	34.4 ( 8.2)	33.2 (8.5)
City/Highway (US only)	N/A	21/27	20/26

<b>CO<sub>2</sub> emissions (g/km)</b>	149	196	199
--	-----	-----	-----

## EXIGE

	EXIGE S	EXIGE CUP 260
0-60 mph (seconds)	4.5	4.0
0-100 km/h (seconds)	4.7	4.1
0-100 mph (0-160 km/h) (seconds)	11.5	9.9
Max speed (mph (km/h))	146 (238)	152 (245)
Max power	220 hp at 8000 rpm (164 kW) (223 PS)	257 hp at 8000 rpm (192 kW) (260 PS)
Max torque	158.6 lbft at 5500 rpm (215 Nm) (22 kgm)	174 lbft at 6000 rpm (236 Nm) (24.1 kgm)
Gear ratios in I	3.116:1	3.116:1
II	2.050:1	2.050:1
III	1.481:1	1.481:1
IV	1.166:1	1.166:1
V	0.916:1	0.916:1
VI	0.815:1	0.815:1
Reverse	3.250:1	3.250:1
Final drive	4.529:1	4.529:1
Unladen vehicle mass (kg)	935	890
Weight distribution front and rear in kg and corner weights	F: 355 R: 580 (38% - 62%)	F: 338 R: 552 (38% - 62%)
Curb weight (lbs) (US only)	2077	2004
Fuel tank capacity	9.6 gal UK (43.5l) 11.5 gal US (43.5l)	

### Fuel consumption (mpg (l/100 km))

Urban	23.7 (11.9)	23.7 (11.9)
Extra Urban	43.5 (6.5)	43.5 (6.5)
Combined	33.2 (8.5)	33.2 (8.5)
City/Highway (US only)	20/26	20/26

<b>CO<sub>2</sub> emissions (g/km)</b>	199	199
--	-----	-----

## EVORA

	EVORA	EVORA S
0-60 mph (seconds)	4.9	4.6
0-100 km/h (seconds)	5.1	4.8
Max speed (mph (km/h))	162 (261)	172 (277)
Max power	276 hp at 6400 rpm (206 kW) (280 PS)	345 hp at 7000 rpm (257.5 kW) (350 PS)
Max torque	258 lbft at 4700 rpm (350 Nm)	295 lbft at 4500 rpm (400 Nm)
Gear ratios in I	3.538:1	3.538:1
II	1.913:1	1.913:1
III	1.218:1	1.407:1
IV	0.86:1	1.091:1
V	0.79:1	0.9697:1
VI	0.638:1	0.8611:1
Reverse	3.831:1	3.831:1
Final drive 1st-4th	3.777:1	3.777:1
Final drive 5th-6th	3.238:1	3.238:1
Unladen vehicle mass (kg)	1382	1437
Weight distribution	(39% - 61%)	(39% - 61%)
Curb weight (lbs) (US only)	3047	3166
Fuel tank capacity	13.1 gal UK (60l) 15.6 gal US (60l)	

### (With Lotus Intelligent Precision Shift)†

	EVORA
0-60 mph (seconds)	5.3
0-100 km/h (seconds)	5.5
Max speed (mph (km/h))	155 (250)
Max power	276 hp at 6400 rpm (206 kW) (280 PS)
Max torque	258 lbft at 4700 rpm (350 Nm)

Gear ratios in I	3.300:1
II	1.900:1
III	1.420:1
IV	1:1
V	0.713:1
VI	0.608:1

Unladen vehicle mass (kg)	1436
Weight distribution	(39% - 61%)
Curb weight (lbs) (US only)	3164

## FUEL CONSUMPTION (mpg (l/100 km))

	EVORA	EVORA (With Sport Gearbox)
Urban	23.4 (12.1)	22.1 (12.8)
Extra Urban	44.8 (6.3)	40.4 (7.0)
Combined	33.2 (8.5)	31.0 (9.1)
City/Highway (US only)	17/27	18/27
	EVORA (With Lotus Intelligent Precision Shift)‡	EVORA S
Urban	22.4 (12.6)	19.4 (14.6)
Extra Urban	42.8 (6.6)	37.2 (7.6)
Combined	32.1 (8.8)	27.7 (10.2)

## CO<sub>2</sub> EMISSIONS (g/km)

	EVORA	EVORA (With Sport Gearbox)
Urban	285	301
Extra Urban	149	165
Combined	199	215
	EVORA (With Lotus Intelligent Precision Shift)‡	EVORA S
Urban	297	341
Extra Urban	156	179
Combined	208	239

## 2-ELEVEN\*

0-60 mph (seconds)	4.3
0-100 km/h (seconds)	4.5
Max speed (mph (km/h))	140 (225)
Max power	189 hp at 7800 rpm (142 kW) (192 PS)
Max torque	133 lbft at 4680 rpm (181 Nm) (18.3 kgm)
Gear ratios in I	3.116:1
II	2.050:1
III	1.481:1
IV	1.166:1
V	0.916:1
VI	0.815:1
Reverse	3.250:1
Final drive 1st-6th	4.529:1
Unladen vehicle mass (kg)	720
Gross vehicle weight (fully loaded car)	974kg
Weight distribution front and rear in kg and corner weights	F: 38% R: 62% (38% - 62%)
Fuel tank capacity	9.6 gal UK (43.5l) 11.5 gal US (43.5l)

N/A = Non Applicable. Indicated figures are estimates at time of going to press and will be confirmed and available at [lotuscars.com](http://lotuscars.com) once figures have been independently confirmed.

‡Lotus Intelligent Precision Shift (Lotus IPS) not available on Evora S.

\* Vehicle performance is dependent on aerodynamic specification, chassis configuration and road conditions. The Lotus 2-Eleven and selected equipment fitted to this vehicle is not road legal in all markets. This car does not comply with European Whole Vehicle Type Approval (EWVTA) regulations. Customers should confirm requirements prior to order. Each customer is responsible for ensuring that their car fully complies with the relevant road/track/race regulations. This vehicle is not covered by the standard manufacturer's warranty, please see [lotuscars.com](http://lotuscars.com) for full details of warranty cover. This does not affect purchaser's statutory rights.



The information and images in this brochure are based on the current technical data when going to print. As part of a policy of continuous specification improvements, Lotus reserves the right to modify specifications, technical equipment, options and colours at any time. For the latest details please contact your authorised Lotus dealership or visit [lotuscars.com](http://lotuscars.com)

Throughout this publication, wherever a feature is described as an option it should be assumed that it will be at extra cost to the base vehicle unless specifically stated to the contrary. All model and colour combinations are subject to availability. Certain options or combinations of options may be unavailable in certain markets.

Performance results may vary depending upon the specification of the particular vehicle, environmental conditions, driving style and other factors. Published figures should be used for comparison purposes only and verification should not be attempted on public roads. Lotus recommends that all local speed and safety laws must be obeyed and safety belts worn at all times. Use of the vehicle on track or in a competitive manner is

not endorsed by Lotus. Participation in any type of timed competitive use will invalidate the manufacturer's warranty and the vehicle will require appropriate levels of expert vehicle preparation and servicing. Use of the launch control system (where fitted) will invalidate the manufacturer's warranty on associated components. Distributors and dealerships are not agents of Lotus and have absolutely no authority to bind Lotus by any express or implied undertaking or representation. All vehicles should be purchased through an authorised Lotus dealership, please see the dealer locator at [lotuscars.com](http://lotuscars.com). Purchaser's statutory rights are not affected.

Note that current print and photographic techniques do not allow us to faithfully reproduce the full depth and tone of the colours in this brochure. This brochure is designed to provide general product information and is not a contractual document or offer of sale. For current information please contact your authorised Lotus dealership.

The details in this brochure cannot be reproduced without the express authorisation of Lotus.

© Group Lotus plc 2010.



Lotus Cars takes its corporate social responsibility seriously. Committed to achieving an FSC 100% claim or FSC Mixed Sources on all of its printed materials.

For further information on the Lotus range, to find your nearest retailer, or to arrange a test drive, please visit our website.

[LOTUSCARS.COM](http://LOTUSCARS.COM)

LOTVS05279

